

# DISCOVER SÖDERÅSEN BEYOND SKÄRALID AND KOPPARHATTEN

The impressive and diverse landscape of Söderåsen continues beyond the national park borders. There is a lot to see! Do you want to avoid crowding or simply discover something new? In this folder we present a few alternatives to the national park.



## KLÖVA HALLAR

A smaller version of Skärålid, complete with talus slopes, cliff faces and a gurgling stream. You'll get a beautiful view of Soffabacken from the Skåneleden trail. There are fireplaces, a dry toilet and wind shelters at Krika. Part of the valley is a bird protection zone 1/3-31/7. Look out for signs.

## TRANERÖDS MOSSE

One of the few undisturbed raised bogs in Skåne, surrounded by coniferous forest. The area is popular among bird watcher and has birdwatcher tower and two hiking trails. There is an accessible boardwalk and dry toilets next to the tower.



## FINSTORP

An easy to get to area on the southern slopes of the Söderåsen ridge. The area has two ponds, you can fish in one of them. There are also a few shorter hiking trails.



## ANDERSTORP

A newly formed nature reserve with old juniper forest and pastures. Interesting from a conservation perspective, as it's currently getting restored.

PHOTO: LÄNSSTYRELSEN SKÅNE



# NEARBY NATURE AREAS



TRANERÖDS MOSSE. PHOTO: ALEX REGNÉR



## HERREVADSKLOSTER

Vast and undulating pasture lands with many very old trees. Rönneå river flows through the nature reserve and is popular for canoeing. The monastery ("kloster") is gone since long but there are plenty of other cultural remains to explore. There area has hiking trails, wind shelters and fireplaces.



## JÄLLABJÄR

Just outside Röstånga you'll find this softly rounded hill that in fact is the remains of an old volcano. Deciduous forest blends with old pasture lands, juniper grasslands and alder marshes. The Skåneleden trail goes through the area, and there are two other hiking trails, both 3 km long. There is a wind shelter, fireplace, and a toilet close to the southern parking.

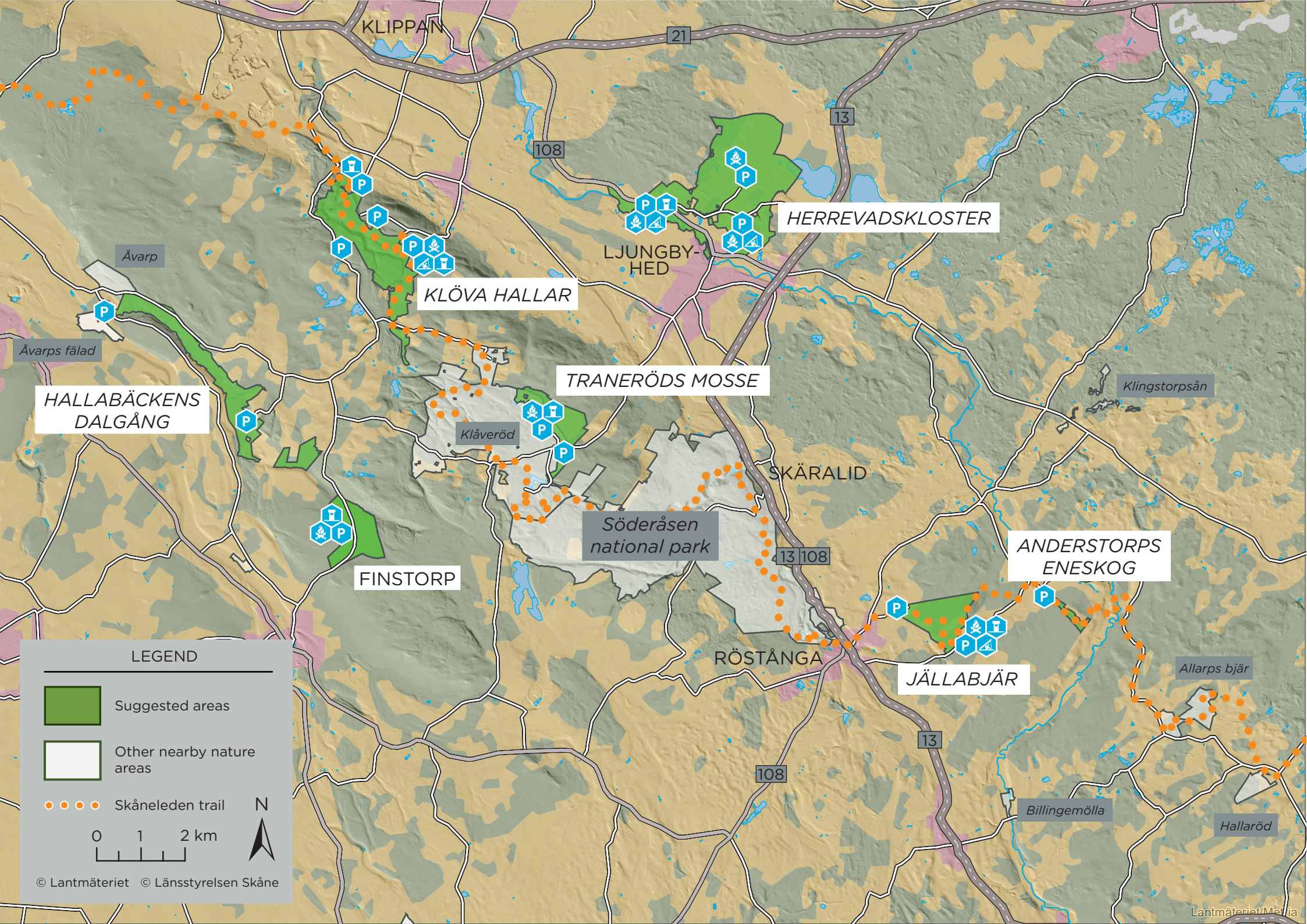


## HALLABÄCKENS DALGÅNG

A valley with shady deciduous forest, old diabase mining pits and a fen. The area is teeming with life – it is home to more than 600 different species of vascular plants and around 70 different kinds of birds are nesting here. Two unmarked trails start at opposite sides of the valley, but they don't meet. Some places in the nature reserve are very steep.

PHOTO: LÄNSSTYRELSEN SKÅNE





KLIPPAN

21

13

108

HERREVADSKLOSTER

LJUNGBY-  
HED

KLÖVA HALLAR

Åvarp

Åvarps fälad

HALLABÄCKENS  
DALGÅNG

TRANERÖDS MOSSE

Klåveröd

SKÄRALID

Söderåsen  
national park

FINSTORP

13 108

ANDERSTORPS  
ENESKOG

Klingstorpsån

RÖSTÅNGA

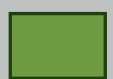
JÄLLABJÄR

Allarps bjär

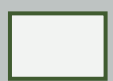
Billingenmølla

Hallaröd

# LEGEND



Suggested areas



Other nearby nature  
areas

Skåneleden trail

0 1 2 km



© Lantmäteriet © Länsstyrelsen Skåne